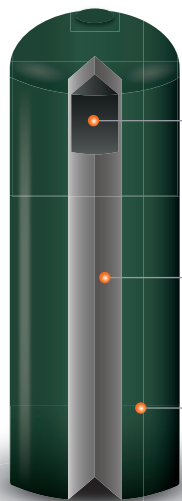




TRACE ELEMENT BOLUSES FOR CATTLE



BOLUS TECHNOLOGY

Dissolvable end-weight ensures bolus remains in reticulum. No residues left after active life

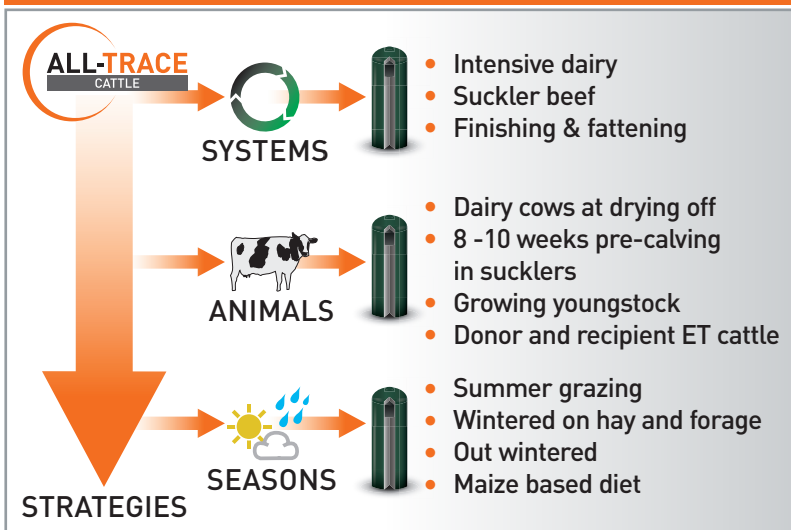
Trace element matrix erodes and nutrients are released into the reticulum

Resin skin controls release rate ensuring consistent daily supply of nutrients

ACTIVE CONSTITUENT	PER DOSE PER DAY (2X BOLUSES)*
Copper	137.6 mg
Selenium	2.1 mg
Cobalt	2.0 mg
OTHER INGREDIENTS	
Zinc	113.6 mg
Manganese	74.1 mg
Iodine	4.3 mg
Vitamin A	3,725 i.u.
Vitamin D ₃	745 i.u.
Vitamin E	6.4 i.u.

* Average over 240 days

MANAGING THE TRACE ELEMENT STATUS OF THE HERD OVER CRITICAL PERIODS OF THE PRODUCTION CYCLE



BENEFITS

- Optimise growth rates in youngstock
- Easier, cleaner calvings
- Strong, healthy calves
- Reduced calving spread
- Optimise conception rates
- Optimise general condition
- Both boluses applied in one single, simple application
- Full range of trace elements
- **Active life 240 days**
- **Administer 2 boluses per animal (over 150 kg)**
- **Pack size - 20 boluses**



PACIFIC BIOLOGICS

PO Box 58, Scarborough, QLD 4020

Ph: (07) 3283 5077 | Fax: (07) 3283 5088 | Email: info@pacificbiologics.com | Web: www.pacificbiologics.com